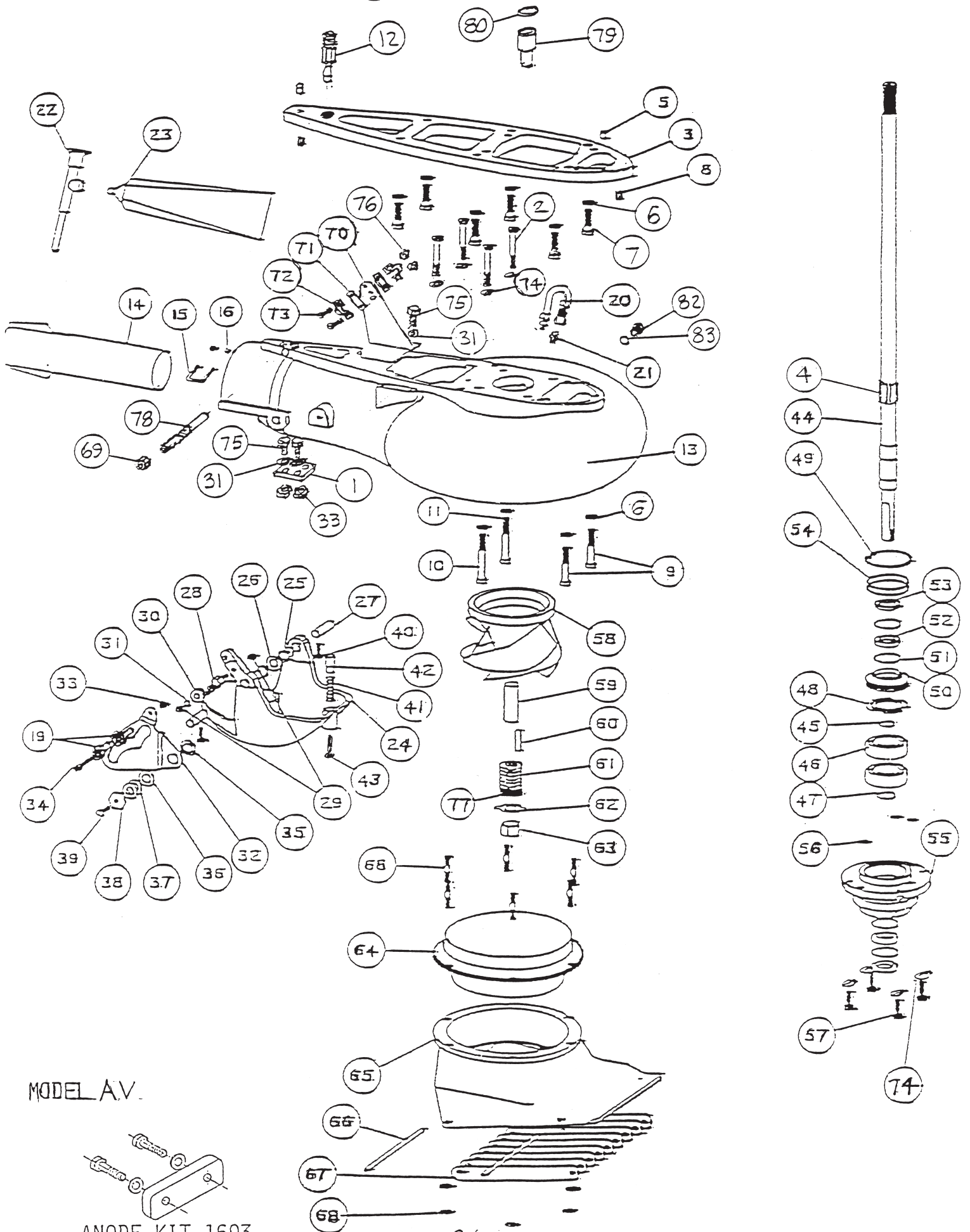
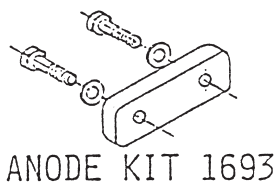


81 - 6 FT NEUTRAL CABLE



MODEL A.V.



**MODEL AV HONDA 200-225 HP
V6 4 STROKE 212 CU. IN.**

REF NO.	QTY	PART NO.	DESCRIPTION	REF NO.	QTY	PART NO.	DESCRIPTION
1	1	1666	OFFSET PLATE	53	2	507	SEAL OUTER 6324-S
2	4	597.1	BOLT HEX HD 5/16-18 X 1 3/4	54	2	527	O RING 568-141 3/32 X 2 5/16X 2 1/2
3	1	1745	ADAPTER PLATE AV	55	1	393.5	BEARING CARRIER W/SEALS & O RINGS 5/16
4	1	1751	SHAFT SHIM	56	3	521	O RING 568-011 1/16X5/16X7/16
5	2	HONDA	DOWEL PIN	57	4	602.1	BOLT HEX HD 5/16-18 X 1 PATCH
6	10	636	WASHER SPRING LOCK M10	58	1	1721	IMPELLER 7 5/8 STAINLESS
7	6	592	BOLT HEX HD M10-1.25 X 35MM	59	1	136	SHAFT SLEEVE PLASTIC LARGE
8	2	616	DOWEL PIN 6 X 16 MM	60	1	1706	IMPELLER TEE KEY - 1/2 ROUND
9	2	608	BOLT HEX HD 3/8-16 X 2 1/4	61	7	121	SHIM WASHERS
10	1	609	BOLT HEX HD 3/8-16 X 2 3/4	62	1	781	NUT KEEPER LARGE 2 PER BAG
11	1	610	BOLT HEX HD 3/8-16 X 3	63	1	122.1	SHAFT NUT 3/4-16 BRASS
12	1	1753	TAPER LOCK STUD			1603.05	INTAKE ASSY FLANGED WITH GRILL BAR & LINER
		1744.05	VOLUTE WITH GATE AV	64	1	1605	LINER FLANGED 7 5/8
13	1	1743.05	VOLUTE WITH EXHAUST TUBE AV	65	1	1602.05	INTAKE PAINTED ONLY 7 5/8
14	1	128	EXHAUST TUBE ASSY LARGE 2 1/2	66	2	1667	GRILL ROD
15	1	845	CLIP EXHAUST TUBE 1 3/8	67	10	1622	GRILL BAR X-LARGE
16	2	621	NYLOC 10-32	68	6	1319	STUD - INTAKE LARGE
19	2	553.2	BALL END 1/4X10-32 CABLE	69	7	625	NYLOC 5/16-18
20	1	975	LUBE HOSE ASSY	70	1	156	BRACKET CABLE SUPPORT
21	1	539	ZIRC FITTING 1/4-28	71	2	542	SHIM MORSE A035777
22	1	550	GREASE GUN	72	2	543	CLAMP CHRYS 154317
23	1	552	GREASE 10 OZ TUBE NO. 630-AA	73	2	561.1	FL HD SLOTTED 10-24 X 3/4
24	1	1172.05	REVERSE GATE LARGE	74	4	640	WASHER SPRING LOCK 5/16
25	2	536	NYLINER 1/2 ID X 13/16	75	4	572	BOLT HEX HD 1/4-20 X 5/8
26	1	1178	SPRING GATE PIVOT 1/2	76	2	619	NYLOC 10-24
27	2	823	PIN GATE PIVOT 1/2 LARGE	77	1	1719	TORSIONAL DAMPER 3/4
28	1	1043	SHAFT ROLLER	78	1	1752	WEDGE BOLT
29	2	624	NYLOC 1/4-28	79	1	1750	WATER TUBE EXTENSION
30	1	1042	ROLLER ASSY	80	1	532.1	O RING - 020 1/16 X 7/8 X 1
31	5	635	1/4 WASHER AN960C416	81	1	556	6 FT. MORSE 33C CABLE
32	1	1034	SHIFT CAM LARGE	82	1	1022	BOLT HEX HD 3/8-16 X 1/2
33	3	623	NYLOC 1/4-20	83	1	1023	WASHER FIBER 3/8
34	1	576	BOLT HEX HD 1/4-20 X 1				
35	1	1037	BUSHING CAM				
36	1	1038	WASHER CAM				
37	2	1039	SHIM - CAM				
38	1	1036	CAM ECCENTRIC DRILLED				
39	1	574.1	BOLT HEX HD 1/4-20 X 1 PATCH				
40	2	574	BOLT HEX HD 1/4-20 X 3/4 PATCH				
41	1	1170	SPRING GATE BUMPER				
42	1	1497	GATE BUMPER				
43	1	559.2	FIL HD SLOTTED 10-32 X 1 1/4 PATCH				
44	1	1748	SHAFT ONLY, AV 19T 30 9/16 LG				
		1749.1	SHAFT ASSY COMPLETE, AV 19T 5/16				
		1766	SHAFT ONLY, AVX 19T 35 9/16 LG				
		1767.1	SHAFT ASSY COMPLETE, AVX 19T 5/16				
45	1	41	SHAFT BEARING THRUST RING				
46	2	502	BEARING 7305B-UA				
47	1	511	TRUARC 5100-98				
48	1	404	BACKUP WASHER				
49	1	513	TRUARC N5002-250ZD				
50	1	432	UPPER SEAL CARRIER W/SEALS & O RINGS				
51	4	517	SPIROLOX RR-150S				
52	2	506	SEAL INNER				

SIZE	TORQUE
1/4-20 (M6)	8-9 FT-LBS
5/16-18 (M8)	12 FT-LBS
3/8-16 (M10)	22 FT-LBS

BEARING, SEAL, SNAP & "O" RING KIT
2 BRG 462.2

NEUTRAL SWITCH CABLE ASSY 1754 SEE
PAGE 26.4